

Table with 3 columns: COULAMON, JANE, COOTAMARRA, WAGGA WAGGA, TARCUTTA, TUMBY, HOLBROOK, ROSEWOOD, WARRAGONGULLY. Grid values are shown in full only at the south-west corner of the map.

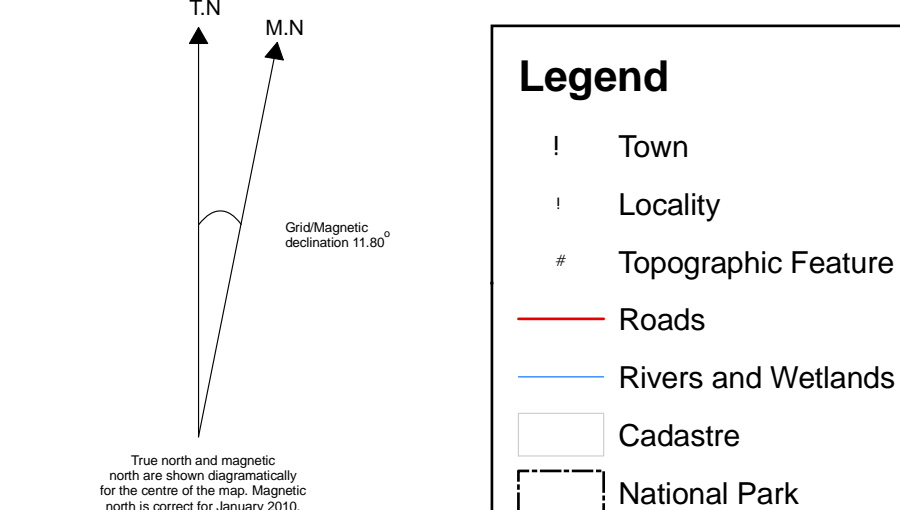
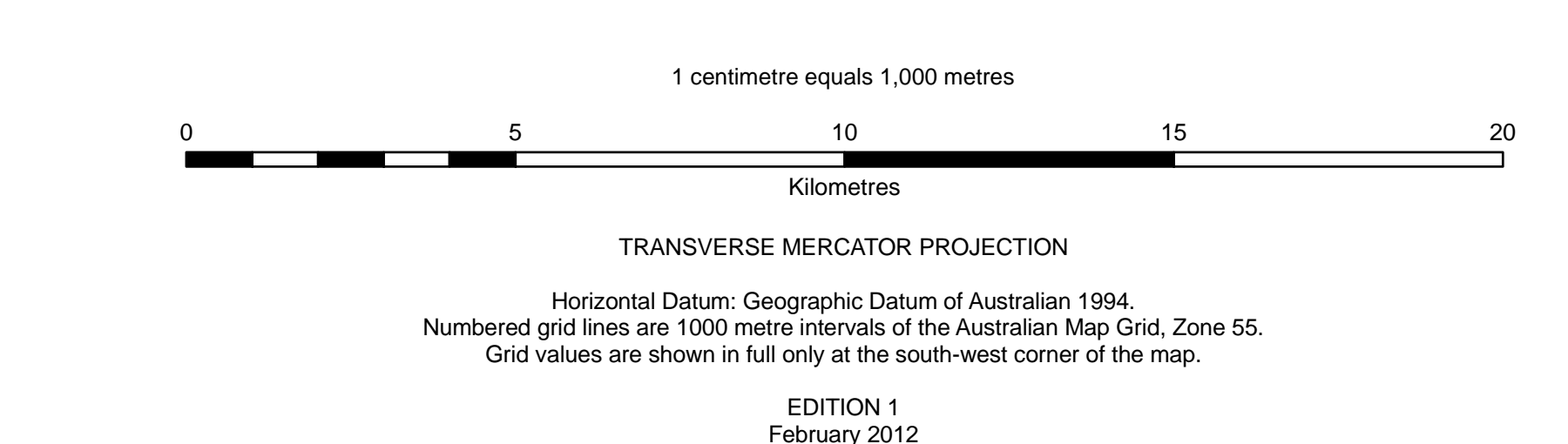
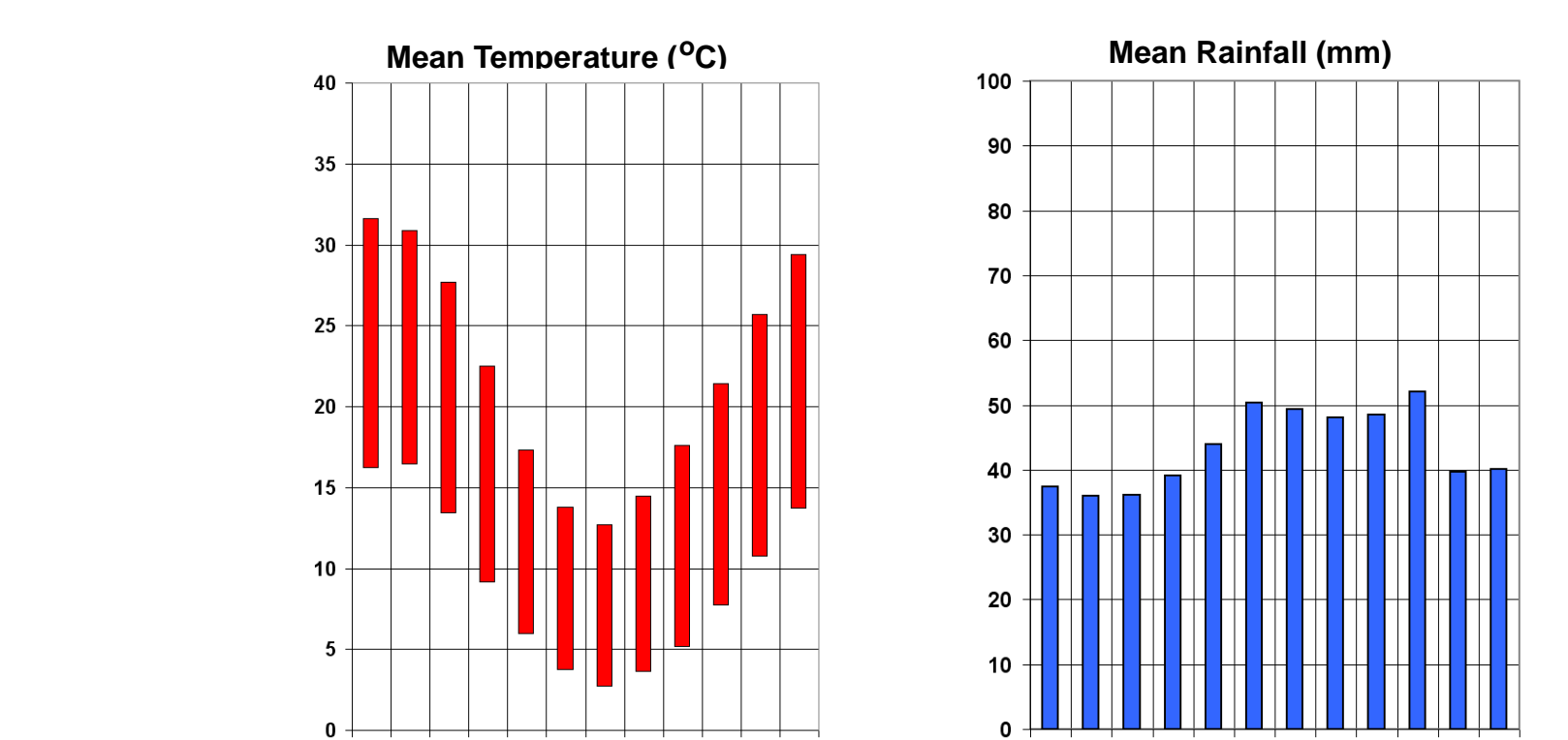
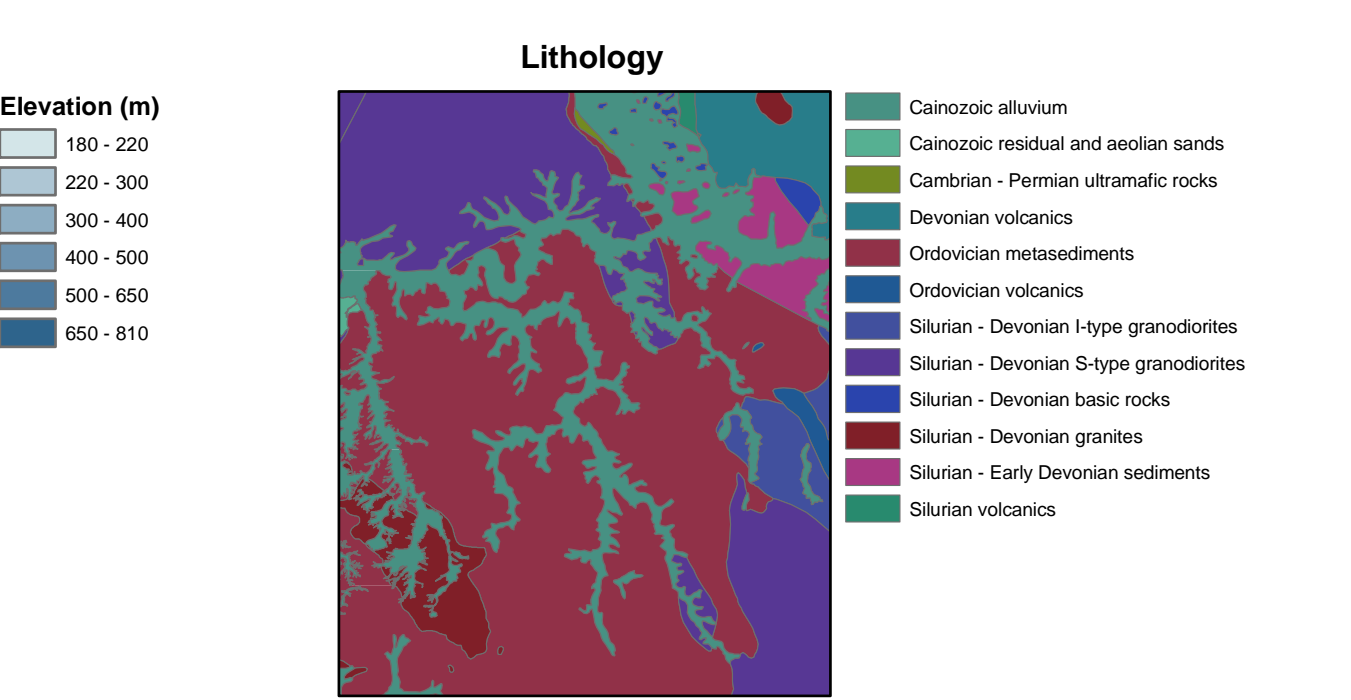
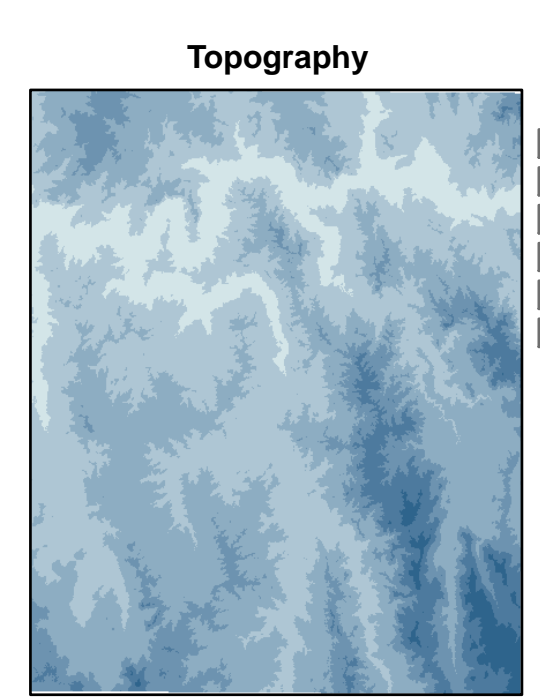


Table with 4 columns: NSWCA ID, NSW VCA Name, Total Area (Landform pattern / main soil types), and Characteristic species in each stratum. Includes sections for Wet Sclerophyll Forests, Grassy Woodlands, Dry Sclerophyll Forests, Freshwater Wetlands, Forested Wetlands, Semi-ruderal Woodlands, and Unclassified.



Prepared by: Office of Environment & Heritage, Quesanbeyan. Project coordination by Rob Armstrong. Technical coordination by Owen Maguire. Digital Aerial Photograph Interpretation undertaken by Paul McDonald. Hard copy map layout by Tobi Edmonds and Rob Armstrong.