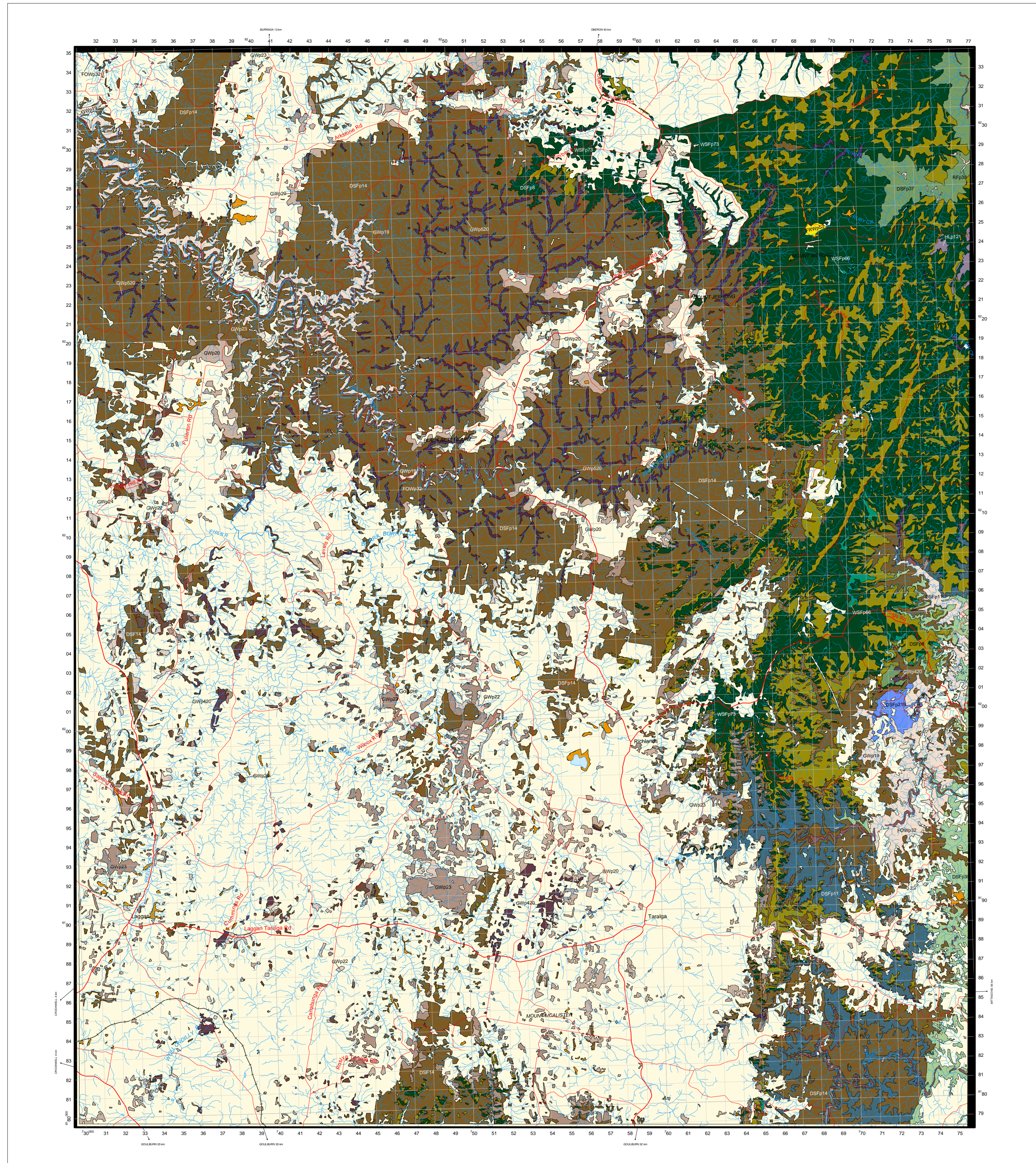
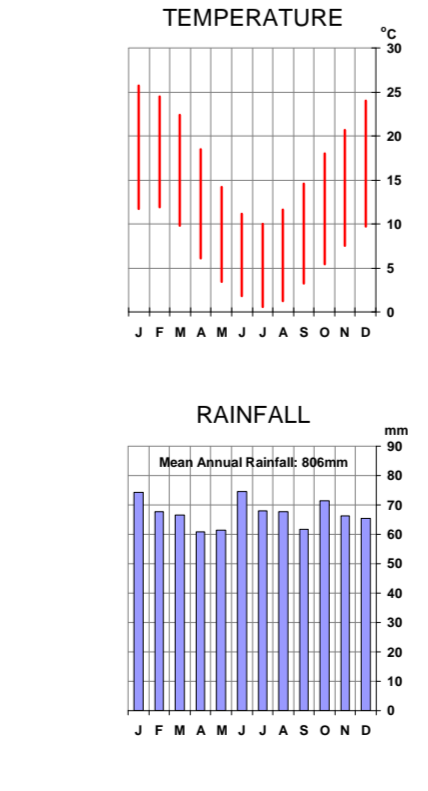
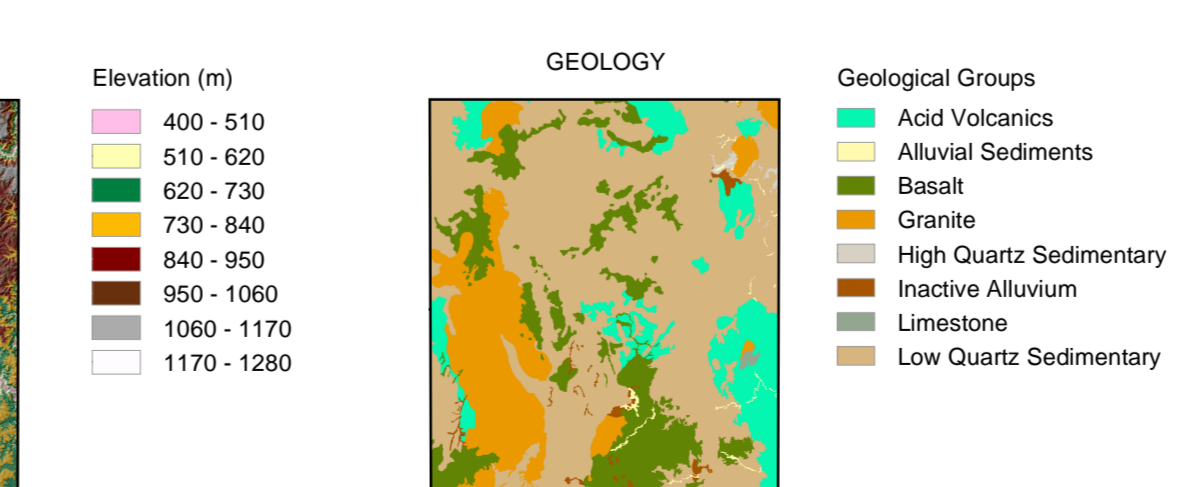
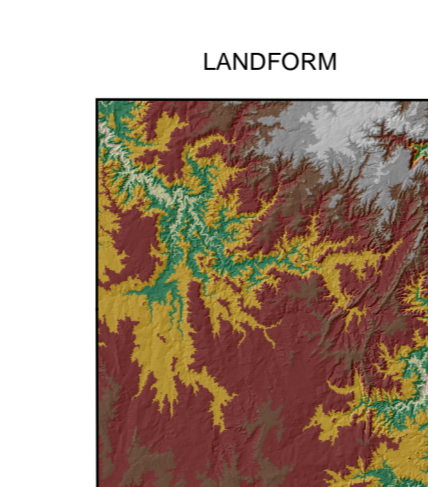
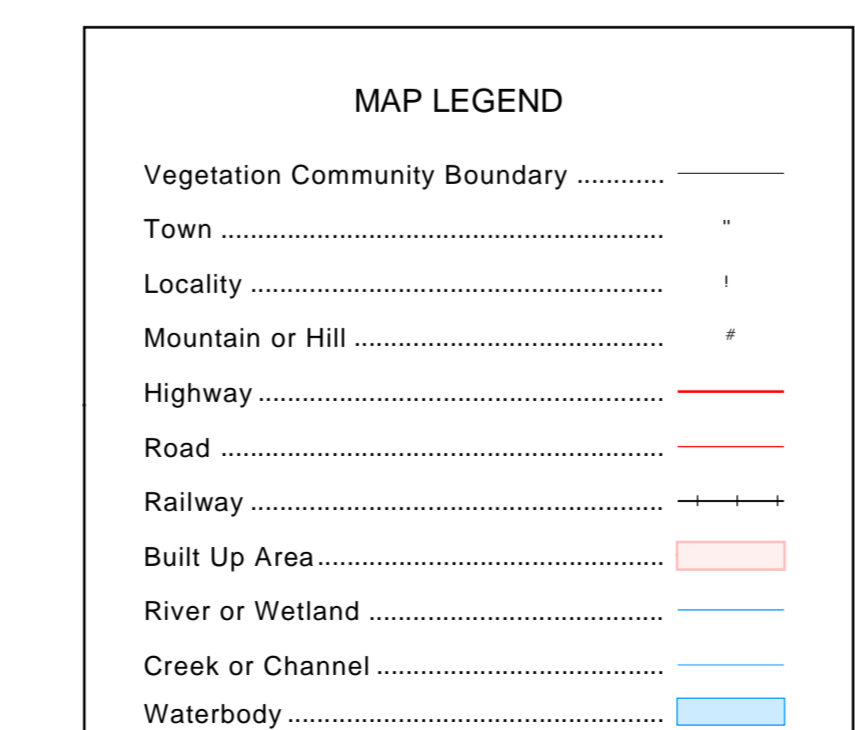
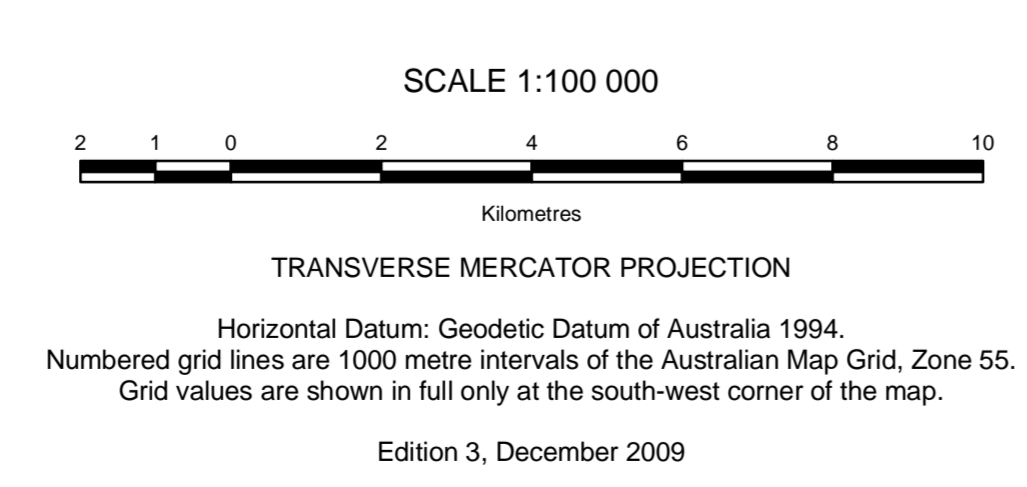
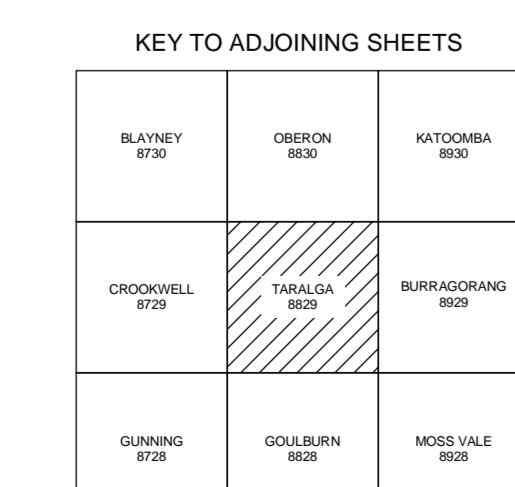
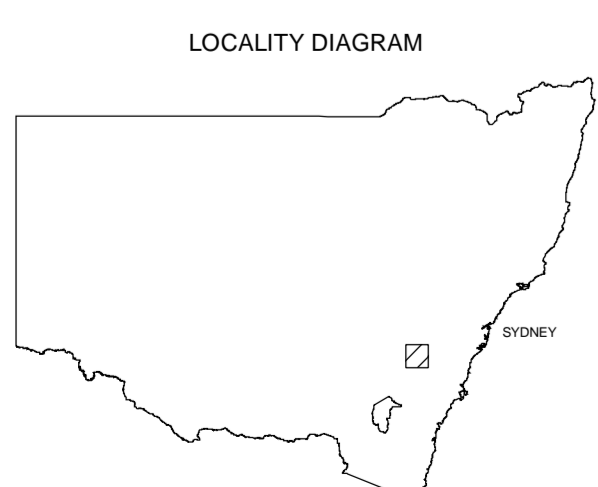


VEGETATION TARALGA - 8829

VEGETATION KEY



A-N Map Unit Code	Map Unit Name	Principal Species	Vegetation Structure	Physical Environment	Area (ha) Present
RF	Grey Myrtle Dry Rainforest	Trees: <i>Bachovia myrtilloides</i> , <i>Nelsoa longifolia</i> , <i>Bryonia oblongifolia</i> , <i>Hymenantes densa</i> , <i>Sigebeckia ornata</i> . Climbers: <i>Geotropis cymosum</i> , <i>Pandorea pandorana</i> , <i>Aphanopetalum resinatum</i> , <i>Eucalyptus latifolia</i> , <i>Cayratia cernuosa</i> . Groundcover: <i>Adiantum aestivum</i> , <i>Asplenium fabellifolium</i> , <i>Pellaea falcata</i> , <i>Dichondra</i> spp., <i>Microseris stipoides</i> , <i>Oplismenus imbricatus</i> , <i>Desmodium varians</i> , <i>Plectranthus parviflorus</i> , <i>Scleria flexilis</i> .	Simple, low closed forest with sparse groundcover.	Steep lower slopes of dry gorges below 500m, Picton, Kowmung/Woolandilly, Shoalhaven-Etterna.	40
RF	Intermediate Temperate Rainforest	Trees: <i>Acmena smithii</i> , <i>Pitroporum undulatum</i> , <i>Doryphora assafrina</i> . Shrubs: <i>Cyathochaeta australis</i> , <i>Cycas australis</i> , <i>Nelsoa venosa</i> , <i>Rapanea howlandii</i> . Climbers: <i>Pandorea pandorana</i> , <i>Smilax australis</i> , <i>Miconia rosacea</i> , <i>Eucalyptus latifolia</i> , <i>Typhlopleura barbata</i> , <i>Microseris scandens</i> , <i>Meriania jamesii</i> . Groundcover: <i>Asplenium fabellifolium</i> , <i>Lasiacis acuminata</i> .	Closed forest with lianes and ferny groundcover.	Moist sheltered gullies on foothills and escarpment, 300-750m, mainly Nelson-Deua.	<10
WF	Coastal Monane Vire Forest	Trees: <i>Eucalyptus radiata</i> , <i>E. fastigata</i> , <i>E. detyreriana</i> , <i>Acacia melanocoryna</i> . Shrubs: <i>Leucopogon lanceolatus</i> . Climbers: <i>Clematis aristata</i> . Groundcover: <i>Pharbitis esculentum</i> , <i>Lomandra longifolia</i> , <i>Vicia hederacea</i> , <i>Stellaria purpurea</i> , <i>Gonocarpus tetragynus</i> , <i>Poa sieberiana</i> , <i>Microseris stipoides</i> , <i>Dianella isanensis</i> , <i>Paranthera microphylla</i> .	Tall eucalypt forest with an open shrub layer and moist herbaceous groundcover.	Elevated ranges on moist loams 800-1250m Chiddingfold Range/Lifelong-Tullagunda.	24500
WF	Highland Range Sheltered Forest	Trees: <i>Eucalyptus radiata</i> , <i>E. fastigata</i> . Shrubs: <i>Leucopogon lanceolatus</i> , <i>Rubus parviflorus</i> . Climbers: <i>Clematis aristata</i> , <i>Glycyne clandestina</i> . Groundcover: <i>Pharbitis esculentum</i> , <i>Lomandra longifolia</i> , <i>Vicia hederacea</i> , <i>Microseris stipoides</i> , <i>Dichondra</i> spp., <i>Desmodium varians</i> , <i>Paranthera microphylla</i> , <i>Echinopogon ovatus</i> , <i>Dianella caerulea</i> , <i>Veronica plebeia</i> , <i>Stellaria purpurea</i> , <i>Plantago debilis</i> .	Tall eucalypt forest with an open shrub layer and moist herbaceous groundcover.	Sheltered slopes on high ranges, mainly 600-1100m, western Blue Mts - Deua.	540
GW	Abercrombie-Tarlo Footslope Woodland	Trees: <i>Eucalyptus bridgesiana</i> , <i>E. macrotrichia</i> . Shrubs: <i>Cassinia longifolia</i> . Groundcover: <i>Hydrocotyle laxiflora</i> , <i>Geranium solanderi</i> , <i>Microseris stipoides</i> , <i>Acacia novae-zelandiae</i> , <i>Chelidonium sieberi</i> , <i>Poa sieberiana</i> , <i>Dichondra</i> spp., <i>Stellaria purpurea</i> , <i>Asplenium fabellifolium</i> , <i>Gonocarpus tetragynus</i> , <i>Rumex brownii</i> .	Open eucalypt forest with sparse shrub layer and grassy groundcover.	Footslopes in rocky parts of the tableland, 600-1000m, in Abercrombie & Tarlo river valleys.	5200
GW	Tableland Basalt Forest	Trees: <i>Acacia melanocoryna</i> , <i>Eucalyptus viminalis</i> , <i>E. radiata</i> . Groundcover: <i>Microseris stipoides</i> , <i>Stellaria purpurea</i> , <i>Pharbitis esculentum</i> , <i>Acacia novae-zelandiae</i> , <i>Dichondra</i> spp., <i>Geranium solanderi</i> , <i>Hydrocotyle laxiflora</i> , <i>Desmodium varians</i> , <i>Echinopogon ovatus</i> , <i>Austrostrophia racemosa</i> , <i>Austrostrophia rufida</i> , <i>Plantago varia</i> , <i>Vicia vesicifolia</i> .	Eucalypt forest with sparse shrubs and dense groundcover of herbs & grass.	Undulating basalt tablelands, 600-1200m, Oberon-Mass Vale.	5000
GW	Frost Hollow Grassy Woodland	Trees: <i>Eucalyptus pauciflora</i> , <i>E. rubida</i> . Groundcover: <i>Themeda australis</i> , <i>Gonocarpus tetragynus</i> , <i>Microseris stipoides</i> , <i>Hypericum gramineum</i> , <i>Chrysosplenium apiculatum</i> , <i>Poa sieberiana</i> , <i>Asperula conferta</i> , <i>Elymus scaber</i> , <i>Hydrocotyle laxiflora</i> .	Open eucalypt forest with sparse shrub layer and dense grassy groundcover.	Frost-hollow flats on undulating tableland 600-900m, Abercrombie-Braeswood.	1600
GW	Tableland Hills Grassy Woodland	Trees: <i>Eucalyptus dives</i> , <i>E. macrotrichia</i> . Shrubs: <i>Melichrus ureceolatus</i> . Groundcover: <i>Microseris stipoides</i> , <i>Gonocarpus tetragynus</i> , <i>Lomandra filiformis</i> ssp. <i>conicea</i> , <i>Hydrocotyle laxiflora</i> , <i>Hypericum gramineum</i> , <i>Hibbertia aristifolia</i> , <i>Goodenia hederacea</i> , <i>Oxalis pennantii</i> , <i>Austrodoritis racemosa</i> .	Open eucalypt forest with sparse shrub layer and grassy groundcover.	Undulating hills on tableland 550-1100m, Hartley-Braeswood.	5300
GW	Tableland Grassy Box Gum Woodland	Trees: <i>Eucalyptus viminalis</i> , <i>E. mellissina</i> . Shrubs: <i>Rubus parviflorus</i> , <i>Acacia melanocoryna</i> . Climbers: <i>Glycyne clandestina</i> . Groundcover: <i>Hydrocotyle laxiflora</i> , <i>Microseris stipoides</i> , <i>Acacia novae-zelandiae</i> , <i>Geranium solanderi</i> , <i>Lomandra filiformis</i> ssp. <i>conicea</i> , <i>Rumex brownii</i> , <i>Dichondra</i> spp., <i>Desmodium varians</i> , <i>Stellaria purpurea</i> , <i>Themeda australis</i> , <i>Austrodoritis racemosa</i> , <i>Hypericum gramineum</i> .	Open eucalypt forest with sparse shrub layer and grassy groundcover.	Loamy soils on undulating tableland 650-900m, Abercrombie River-Braeswood.	890
GW	Tableland Granite Grassy Woodland	Trees: <i>Eucalyptus viminalis</i> , <i>E. mellissina</i> . Shrubs: <i>Rubus parviflorus</i> , <i>Acacia melanocoryna</i> . Climbers: <i>Glycyne clandestina</i> . Groundcover: <i>Hydrocotyle laxiflora</i> , <i>Microseris stipoides</i> , <i>Acacia novae-zelandiae</i> , <i>Geranium solanderi</i> , <i>Lomandra filiformis</i> ssp. <i>conicea</i> , <i>Rumex brownii</i> , <i>Dichondra</i> spp., <i>Desmodium varians</i> , <i>Stellaria purpurea</i> , <i>Themeda australis</i> , <i>Austrodoritis racemosa</i> , <i>Hypericum gramineum</i> .	Eucalypt woodland with sparse shrub layer and grassy groundcover.	Riding granite terrain 550-1050m on the tablelands, Hartley-Braeswood.	870
DF	Eastern Gorge Forest	Trees: <i>Eucalyptus punctata</i> , <i>E. agglomerata</i> . Shrubs: <i>Personna linearis</i> , <i>Rhytidium hirtellum</i> , <i>Hibbertia obtusifolia</i> , <i>Oxera viscidula</i> , <i>Podochloa strictum</i> . Climbers: <i>Hederbergia violacea</i> , <i>Bilardiera scandens</i> . Groundcover: <i>Goodenia hederacea</i> , <i>Panicum umbellatum</i> , <i>Dianella revoluta</i> , <i>Lomandra multiflora</i> , <i>L. filiformis</i> , <i>Opeucroa distypha</i> .	Eucalypt forest with open understorey of sclerophyll shrubs & grasses.	Dry upper slopes of rocky gorges 400-850m, upper Woolandilly & Shoalhaven gorges.	4100
DF	Woolandilly-Cox Shoalhaven Gorge Woodland	Trees: <i>Eucalyptus imbricaria</i> , <i>Brachybotryopsis papuana</i> , <i>E. meliobota</i> . Shrubs: <i>Oxera viscidula</i> , <i>Buraria sparsa</i> , <i>Lixianthe sinigera</i> . Climbers: <i>Glycyne clandestina</i> , <i>Clematis aristata</i> . Groundcover: <i>Dichondra</i> spp., <i>Chelidonium sieberi</i> , <i>Desmodium varians</i> , <i>Lomandra multiflora</i> , <i>L. longifolia</i> , <i>Acacia remota</i> , <i>Chelidonium sieberi</i> , <i>Dactyloctenium aegyptium</i> , <i>Microseris stipoides</i> , <i>Desmodium brachybotryoides</i> , <i>Hypericum gramineum</i> .	Eucalypt woodland with a mixed understorey of shrubs, forbs & grasses.	Loams on dry slopes within rocky gorges 150-700m, gorges of Woolandilly & Shoalhaven.	2100
DF	Kowmung/Woolandilly Grassy Gorge Woodland	Trees: <i>Eucalyptus punctata</i> , <i>E. supracostata</i> . Shrubs: <i>Oxera viscidula</i> , <i>Acacia laetiflora</i> . Climbers: <i>Glycyne clandestina</i> , <i>Geotropis cymosum</i> , <i>Clematis aristata</i> . Groundcover: <i>Dichondra</i> spp., <i>Plata purpurascens</i> , <i>Lomandra longifolia</i> , <i>Desmodium gurneyi</i> , <i>Paranthera microphylla</i> , <i>Echinopogon ovatus</i> , <i>Veronica plebeia</i> , <i>Wahlenbergia stricta</i> , <i>Hypericum gramineum</i> , <i>Lomandra multiflora</i> , <i>Chelidonium sieberi</i> , <i>Poa sieberiana</i> , <i>Plantago debilis</i> , <i>Sulium jungermannii</i> .	Dry eucalypt woodland with an open shrub layer and prominent groundcover of forbs & grasses.	Loams on dry slopes within rocky gorges 150-750m, Kowmung & Woolandilly gorges.	1700
DF	Wombeyan Caves Woodland	Trees: <i>Eucalyptus bridgesiana</i> , <i>Brachybotryopsis papuana</i> . Shrubs: <i>Acacia chandleri</i> , <i>Cassinia leavis</i> , <i>C. longifolia</i> , <i>Hymenantes densa</i> . Groundcover: <i>Dichondra</i> spp., <i>Lomandra longifolia</i> , <i>Hydrocotyle laxiflora</i> , <i>Poa sieberiana</i> , <i>Acacia novae-zelandiae</i> , <i>Austrostrophia rufida</i> ssp. <i>renovata</i> , <i>Cymbopogon refractus</i> , <i>Elymus scaber</i> , <i>Galium prostratum</i> , <i>Grewia arenaria</i> , <i>Oxalis exilis</i> , <i>Plantago nigrida</i> , <i>Wahlenbergia stricta</i> .	Eucalypt forest with sparse shrub layer and groundcover of herbs & grass.	Dry clay soils on limestone at Wombeyan Caves.	310
DF	Tableland Ridge Forest	Trees: <i>Eucalyptus sieberi</i> , <i>E. radiata</i> . Shrubs: <i>Hibbertia obtusifolia</i> , <i>Personna linearis</i> , <i>Leucopogon lanceolatus</i> , <i>Minoclea scoparia</i> . Groundcover: <i>Gonocarpus tetragynus</i> , <i>Lomandra longifolia</i> , <i>Dianella revoluta</i> , <i>Poa sieberiana</i> .	Eucalypt forest with open understorey of sclerophyll shrubs, forbs, sedges & grass.	Sandy loams on ridges and dry slopes on high ranges 650-1200m, Hartley-Big Basils.	13300
DF	Eastern Tablelands Dry Forest	Trees: <i>Eucalyptus sieberi</i> , <i>E. agglomerata</i> . Shrubs: <i>Personna linearis</i> , <i>Allocasuarina littoralis</i> , <i>Hibbertia obtusifolia</i> , <i>Symplocos pauciflora</i> . Climbers: <i>Bilardiera scandens</i> . Groundcover: <i>Goodenia hederacea</i> , <i>Panicum umbellatum</i> , <i>Lomandra obliqua</i> , <i>Microseris stipoides</i> .	Open eucalypt forest with open understorey of sclerophyll shrubs, sedges & forbs.	Sandy loams on ridges on the eastern tableland margin 550-900m, Joadja-Braeswood.	1100
DF	Western Tablelands Dry Forest	Trees: <i>Eucalyptus viminalis</i> , <i>E. mellissina</i> , <i>E. radiata</i> , <i>E. dives</i> . Shrubs: <i>Hibbertia obtusifolia</i> , <i>Brachybotryopsis papuana</i> , <i>Desmodium varians</i> . Groundcover: <i>Gonocarpus tetragynus</i> , <i>Lomandra filiformis</i> ssp. <i>conicea</i> , <i>Poa sieberiana</i> , <i>Goodenia hederacea</i> , <i>Dianella revoluta</i> , <i>Agrostis pallens</i> , <i>Alone linearis</i> .	Low eucalypt forest with open understorey of sclerophyll shrubs, grasses & forbs.	Sandy loams on ridges of the tableland interior 550-1150m, Wahlenberg-Captains Flat.	63100
HE	Loomahga Plateau Heath	Trees: <i>Eucalyptus detyreriana</i> , <i>Eucalyptus stricta</i> . Shrubs: <i>Banksia marginata</i> , <i>Egicarpis microphylla</i> , <i>Hibbertia strydomii</i> , <i>Lepidosperma concoloratum</i> , <i>Lomatia stricta</i> , <i>Phyllocladus imbricatus</i> , <i>Kurcia cambagei</i> , <i>Leucopogon microphyllus</i> , <i>Lomatia stricta</i> , <i>Rhytidium procumbens</i> . Groundcover: <i>Cladonia fruticosa</i> , <i>Grewia laetifolia</i> , <i>Lepidosperma concoloratum</i> , <i>Drosera petata</i> , <i>Goodenia bellifolia</i> , <i>Lindbaea linearis</i> , <i>Platanonella fragilis</i> , <i>Sowerbaea juncea</i> , <i>Sphaerobolus minus</i> , <i>Stachytaraxa viminea</i> , <i>Thymus scaberrimus</i> .	Open shrub canopy with emergent mallées & thick groundcover of sedges & forbs.	Matsumedimentary plateaus with damp shallow sandy loams 1100-1200m, Loomahga plateau.	150
FW	Tableland Bog	Shrubs: <i>Epacris microphylla</i> , <i>Leptosperma concoloratum</i> , <i>L. myrsinifolium</i> . Groundcover: <i>Empodisma minus</i> , <i>Gonocarpus micranthus</i> , <i>Lepidosperma concoloratum</i> , <i>Lepidosperma imicola</i> .	Open to sparse shrub canopy with dense groundcover of sedges & forbs.	Humic loams & peats on granite & siltstones in headwater valleys 500-1200m, Blue Mts-Deua.	50
FW	Tableland Swamp Meadow	Shrubs: <i>Lepidosperma juniperum</i> , <i>L. obovatum</i> , <i>Lyrurus salicaria</i> . Groundcover: <i>Baumea rubiginosa</i> , <i>Carex gaudichaudiana</i> , <i>Eleocharis spicata</i> , <i>Hydrocotyle pedunculata</i> , <i>Isachne globosa</i> , <i>Juncus ustulatus</i> , <i>Lepidosperma juniperum</i> , <i>Phragmites australis</i> , <i>Ranunculus inundatus</i> .	Dense groundcover of water-tolerant, soft-leaved sedges and forbs, occasionally with scattered trees and an open to dense shrub layer.	Flats and humic loams in sediment-filled valleys from the Blue Mountains to Braeswood, 300-1100m.	700
FW	Riverbank Forest	Trees: <i>Casuarina cunninghamiana</i> . Shrubs: <i>Hymenantes densa</i> , <i>Urtica incisa</i> . Climbers: <i>Stephania japonica</i> , <i>Pandorea pandorana</i> . Groundcover: <i>Microseris stipoides</i> , <i>Lomandra longifolia</i> , <i>Oplismenus aeneus</i> , <i>Dichondra repens</i> .	Forest with an open shrub layer and a dense or patchy groundcover of grasses & forbs.	Sand/gravel alluvium along south-facing streams 20-600m, Cox, Abercrombie, Woolandilly, Shoalhaven & Deua river systems.	1200
GW	Tableland Swamp Flats Forest	Trees: <i>Eucalyptus viminalis</i> , <i>E. pauciflora</i> . Shrubs: <i>Rubus parviflorus</i> . Groundcover: <i>Microseris stipoides</i> , <i>Dichondra</i> spp., <i>Acacia novae-zelandiae</i> , <i>Hydrocotyle laxiflora</i> , <i>Stellaria purpurea</i> , <i>Poa tabillardensis</i> , <i>Echinopogon ovatus</i> , <i>Geranium solanderi</i> , <i>Desmodium varians</i> .	Open eucalypt forest with sparse shrubs & dense grassy groundcover.	Phony-drained flats in headwaters of streams 550-1200m, Jerrildon-Deua.	3700
NV	Modified or disturbed land	Unimproved or bare areas largely without native vegetation, forests, shrublands, grasslands and herbfields comprised primarily of exotic plant species, including exotic plantations and pastures. May include variable components of native species depending on seasonal conditions and regrowth rates.			



This map forms part of the Native Vegetation Mapping Report Series 4, NSW Native Vegetation Mapping Program.
 Map compiled by staff of the Scientific Services Division, NSW Department of Environment, Climate Change & Water.
 * Drainage data supplied by NSW Department of Lands, Panorama Ave Bathurst NSW 2795.
 * Geological data supplied by the Department of Mineral Resources, PO Box 536 St Leonards NSW 1590.
 The information contained in and by this map has been compiled from several sources and may contain errors and omissions. No warranty or representation, expressed or implied, is made with respect to the accuracy of this information, or its suitability for any purpose. The NSW Department of Environment, Climate Change & Water disclaims all and any liability to any person in respect of anything done or omitted to be done in reliance, whether wholly or in part, upon this information.
 This map is only reliable at the published scale of 1:100,000.
 Copyright New South Wales Government. All Rights Reserved.
 No part of this map may be reproduced without permission.

