



Australian Botanic Garden Mount Annan

School Cross Country - Information and Booking Form

Welcome to the Australian Botanic Garden (ABG), a unique and picturesque venue for cross-country events and sporting activities. Our expansive garden offers a safe, organised, and natural environment for participants of all ages and fitness levels.

Our Garden

The Botanic Gardens of Sydney is dedicated to botanical science, horticulture, and preserving cultural heritage while fostering a deep connection between people and nature.

Spanning 416 hectares in South West Sydney, the Australian Botanic Garden Mount Annan is home to a vast collection of native flora and serves as the flagship campus of the Australian Institute of Botanical Science. As a site of national significance, the Garden is managed to support community enjoyment, social connection, and wellbeing.

Open 365 days a year, the Garden welcomes a diverse range of visitors who engage in recreation, education, and cultural experiences. Balancing these varied uses is a complex task, but the Trust remains committed to providing inclusive opportunities for leisure, arts, sports, entertainment, and learning for all.

Cross Country Information

This document outlines the details of the facilities, track options, and logistical arrangements for School Cross Countries held at the Australian Botanic Garden Mount Annan.

Track Options and Customisation

ABG offers a variety of tracks suitable for cross-country events. Images are clearly marked with recommend marshal checkpoints, to ensure safe visibility of students throughout the course.

To enhance flexibility for schools and organisers, the tracks can be customised as follows:

Track Details

1.5 km Track

- **Features:** Ideal for shorter runs or junior participants.
- **Location:** Start and Ends at Lakeside Lawn. Loops around scenic open spaces and natural landscapes.

1 km Track

- **Features:** Suitable for younger runners or practice sessions.
- **Route:** Starts and ends between Lakeside and Marquee Lawn. Winds through gardens and shaded areas. This track is more off-road than the others.

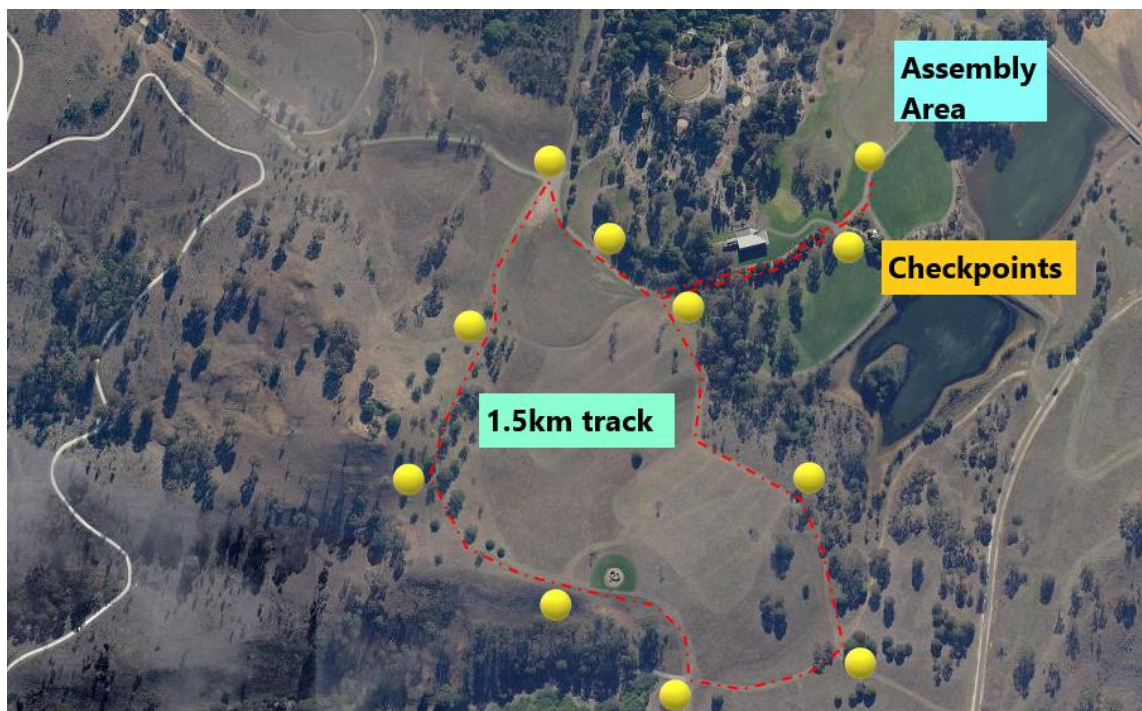
2 km Track

- **Features:** Best for more advanced participants or those seeking a longer run.
- **Description:** Covers varied terrain and incline, providing a challenge for competitors.

Customisation Options

- **Extended Courses:** Tracks can be looped to create longer courses. For example, schools can combine the 1.5 km and 2 km tracks to create a 3.5 km course. This provides flexibility for events requiring a mix of distances.
 - **School-Designed Courses:** Schools can create their own custom track layout within the garden by submitting a diagram of the desired course. Our team will review and confirm availability.
-

1.5km Track



1km and 2km Tracks



School Cross Countries - Information and Booking Form

School Responsibilities

- **Provide Markers:** Supply their own cones and markers to delineate the course.
- **Station Marshalls:** Position marshals at all checkpoint points to assist and guide participants. Marshalls are also responsible for safety oversight during the event.
- **Site Walk-Through:** We highly recommend a site walk-through prior to your booking. We will meet with you to walk through the course, point out marshal locations, assembly areas and run through any questions or requests. Email mtannan.events@botanicgardens.nsw.gov.au to book a time.
- **First Aid:** If anyone is injured, it is your responsibility to call the duty ranger to report the incident. Rangers can also assist with first aid. Duty Ranger: 0409 122 953.

Venue Responsibilities

- **Pre-Mowed Tracks:** Our horticulture team will prepare the selected tracks prior to your event. Tracks will be freshly mowed based on the course(s) chosen by the school to ensure they are clear and ready for use.
- **Booked Venue:** Your assembly area will be booked, as well as ABG staff notified of the event and bus parking required. If you have booked vehicle escorts, rangers will be notified to conduct these.

This added flexibility and collaboration between schools and the ABG ensure an organised and enjoyable event while maintaining a safe and scenic environment.

Bus Drop-Off and Parking

- **Drop-Off/Collection Point:** A designated ensures seamless drop-offs and pick-ups for school or group events. The drop-off zone is adjacent to the Gardens Café, along Yandelora Cct.
- **Bus Parking:** Located conveniently within walking distance of the tracks and assembly areas. Once the bus has dropped off participants, they loop through Yandelora Circuit and park.



School Cross Countries - Information and Booking Form

Assembly Areas

1. [Lakeside Lawn](#)

- This is the most used assembly area. Lakeside Lawn offers an open space, by the lake. Shaded by large trees and close to parking and amenities. There is ample space for additional games and activities.

2. [Marquee Lawn](#)

- Marquee Lawn is a further-walk away from parking, though still close to amenities. Schools would be required to bring their own shade structures.

3. [Lakeside Pavilion](#)

- Ideal for smaller school groups (>100), a shelter with access to bbqs, toilets, and picnic tables.



Whilst in the assembly area, ABG's terms and conditions must be followed. Drawing additional attention to:

- Waste management is the responsibility of the hirer. Whilst general waste and recycling bins are provided throughout the Garden, we ask that you supply additional bins and take your rubbish with you when you leave. Rubbish left by your event will incur a fine.
- Please do not stand or walk in garden beds or climb trees or structures.
- Please do not attach decorations to trees, buildings or other structures. No pegs or spikes are allowed in the lawns and all items must be weighted.
- Vehicles are only permitted on public roads within the Garden. No vehicles may drive on the grass or off the public roads without having vehicle escorts pre-booked.
- Prohibited items and activities are:
 - Bat and Ball games
 - Balloons and Inflatables
 - Mechanical rides and machines
- Shade Structures can be a maximum size of 3m x 3m with 20kg weight per leg.
- Students must always have adequate supervision

Facilities

Any damage to the grounds or facilities being used must be detailed in writing and reported immediately to the Ranger on Duty (0409 122 953). The cost of restoring the grounds and buildings will be charged to the hirer.

It is the responsibility of the hirer to ensure that grounds and facilities are always maintained in a clean and tidy state. The cost of any excessive cleaning and ground restoration by the Trust will be charged to the hirer. If a facility or ground is found to be in disorder at the commencement it should be reported to Ranger on Duty on 0409 122 953.

Fees and Payment

Fees are \$4.00 per student with a minimum of \$200 payable for each booking.

If you need to cancel your event, 50% of the minimum fee is payable.

Post-event, please email the events team how many students participated in the event. An invoice will then be issued with payment due in 5 business days.

If you have any queries, please contact the team at mtannan.events@botanicgardens.nsw.gov.au

Supporting Documentation

All documentation and information are required at a minimum, two weeks, prior to your booking:

- Public Liability Insurance \$20m
- Risk Analysis and Management Plan
- Final timings of event
- Final number of attendees

Please send through to the team at mtannan.events@botanicgardens.nsw.gov.au

Booking Form

APPLICANT DETAILS

Name

Organisation

Billing Address

Phone

Email

BOOKING DETAILS

Date

Set-Up Time

Start Time

Finish Time

Number of Participants

Number of Officials

Number of Spectators

Number of Buses

VENUE AND COURSE Please circle/highlight your options

ASSEMBLY AREA	Lakeside Lawn	Marquee Lawn	Lakeside Pavilion
COURSE	1km	1.5km	2km

CUSTOM / COMBINED
COURSE (write your request,
and attach image if required)

Please read through the general [terms and conditions](#) on our website. By submitting your application, you agree with the conditions outlined. It is the hirer's responsibility to ensure that all members of their organisation are familiar with the terms and conditions. Applications are also bound by the Royal Botanic Garden and Domain Trust Regulations.

If you have any queries, please contact the team at mtannan.events@botanicgardens.nsw.gov.au

Attachments