



BOTANIC
GARDENS
OF SYDNEY

BLUE MOUNTAINS BOTANIC GARDEN MOUNT TOMAH
DARUG COUNTRY

WEDDINGS

At Blue Mountains Botanic
Garden Mount Tomah,
nature's beauty and
unforgettable moments unite
in one breathtaking location.

Set high in UNESCO World
Heritage-listed mountain surrounds,
Blue Mountains Botanic Garden
Mount Tomah (Garden) is a place
where love stories unfold among
dramatic landscapes and ever-
changing seasonal displays.

Every corner of the Garden offers
something special — whether it's
spring varieties in full bloom, golden
autumn leaves, the gentle stillness
of winter or the glow of a summer
sunset. Each season reveals a
new side of this remarkable place,
providing the perfect backdrop for
weddings of all sizes and styles.

When you choose this Garden,
you're not only creating an
unforgettable celebration — you're
also helping to protect its future.
Your event supports vital work in
plant conservation, horticulture
and science.

With an array of unique venues,
sweeping views and endless
photo opportunities, we invite you
to celebrate your day in a venue
that's as inspiring and personal
as the love you share.



A scenic view of a stone-lined circular pool in a lush forest, with mountains in the background. The pool is constructed from dark, stacked stones and is surrounded by dense greenery and ferns. In the background, rolling mountains are visible under a soft, hazy sky.

CELEBRATE
IN NATURE

A romantic wedding photograph of a couple in a forest. The groom, with a beard and dark hair, wears a dark blue suit. The bride has blonde hair with a floral crown and wears a white lace dress with a long veil. They are embracing and about to kiss. The background is a soft-focus forest with trees and a path covered in brown leaves.

WEDDING VENUES



WEDDING TREE TERRACE	04
FORMAL GARDEN	06
HEATH & HEATHER GARDEN AND NORTHERN PAVILION	10
EUCALYPTUS LAWN	12
RESIDENCE GARDEN	14
WARATAH ROOM	16
THE BEACH	18
BRUNET PAVILION	19



WEDDING TREE TERRACE



A signature setting with sweeping views and natural beauty.

Set beneath the dappled canopy of a majestic Nepalese Alder, Wedding Tree Terrace is the Garden's most iconic ceremony space. Framed by basalt dry stone walls sourced from the grounds and overlooking the Rock Garden and valley below, this terraced lawn captures the essence of a Blue Mountains celebration.

With uninterrupted views across the landscape and the Fountain Terrace area of the Garden included, it's a breathtaking setting in every season — where nature plays a leading role in your special moment.

As our most sought-after location, we recommend booking early to secure your preferred date. Whether it's spring blossoms, autumn colour or golden summer light, this timeless space offers a picture-perfect backdrop all year round.

Capacity: 80 people

Event Types: Ceremony, Photography

FORMAL GARDEN





A timeless setting inspired by European romance.

Positioned near the main Garden entry, the Formal Garden is a beautifully composed space modelled on a 17th-century European garden. Manicured lawns, wisteria-draped trellises, Banksia Roses and sculpted hedges create an elegant and intimate backdrop for ceremonies, cocktail receptions and marquee celebrations. With easy access to amenities, power and after-hours use, it's a versatile and refined choice for your day.

This garden is particularly striking in spring, when the surrounding blooms bring vibrant colour and fragrance to the space. For couples seeking to host both ceremony and reception in one seamless location, the addition of a marquee offers the perfect solution — combining convenience with a sense of occasion in a setting rich with seasonal charm.

.....
Capacity: 120 people
.....

Event Types: Ceremony,
Outdoor Cocktail Reception,
Marquee Reception, Photography
.....

Facilities: Power Access, After-Hours Use,
Proposal, Close to Amenities and Parking
.....



BLUE MOUNTAINS BOTANIC GARDEN MOUNT TOMAH

Celebrate your special day
surrounded by natural beauty.

DARUG COUNTRY





HEATH & HEATHER GARDEN AND NORTHERN PAVILION

A romantic garden setting with a scenic outlook and serene pavilion.

Tucked away in a peaceful pocket of the Garden, Heath & Heather Garden offers a secluded and romantic setting for your ceremony or cocktail celebration. Surrounded by the colours and textures of native heathlands, this expansive lawn opens to views across the valley, while the Asian-inspired Northern Pavilion provides a striking focal point for exchanging vows.

With space to host up to 150 guests, this venue is ideal for relaxed gatherings in a natural setting. Whether you're planning a garden ceremony or an elegant cocktail reception under the open sky, the Heath & Heather Garden offers both intimacy and impact — along with stunning photo opportunities throughout.

Capacity: 150 people

Event Types: Ceremony,
Outdoor Cocktail Reception,
Proposal, Photography



EUCALYPTUS LAWN



A signature setting with towering eucalypts and lush lawns.

Nestled beneath the towering canopy of *Eucalyptus fastigata* and surrounded by seasonal rhododendron blooms, Eucalyptus Lawn offers a peaceful, leafy retreat for wedding ceremonies and outdoor celebrations. The space feels secluded yet expansive — perfect for those seeking a relaxed, nature-rich setting in the heart of the Garden.

With its open lawns, shaded areas and power access, this venue is an ideal choice for cocktail receptions or casual gatherings. The natural beauty of this setting makes it a popular spot for photography, offering a backdrop of tall gums, dappled light and a quiet sense of connection to Country.

Capacity: 100 people

Event Types: Ceremony, Outdoor
Cocktail Reception, Proposal, Photography

Facilities: Power Access



A full-page photograph of a wedding couple in a garden. The bride, wearing a long white gown and a long veil, holds a bouquet of red and orange flowers. The groom, in a dark blue suit, stands next to her. They are positioned on a stone path, surrounded by lush greenery and trees with vibrant autumn foliage in shades of red, orange, and yellow. The scene is romantic and picturesque.

RESIDENCE GARDEN



A vibrant garden alive with seasonal colour.

Framed by flowering cherry blossoms in spring and colourful maples in autumn, the Residence Garden is a picture-perfect setting for wedding ceremonies. With sweeping garden beds filled with camellias, azaleas and rhododendrons, this space offers a dynamic display of colour across the seasons, making it a beautiful choice year-round.

Set on a gentle slope, it's a space that invites connection, celebration and memorable moments among nature's finest.

Capacity: 150 people

Event Types: Ceremony, Proposal, Photography

WARATAH ROOM



A flexible indoor venue with garden views and modern amenities.

Positioned with views across the Residence Garden, the Waratah Room is a warm and welcoming indoor venue — perfect for receptions, intimate gatherings, or as a stylish wet-weather alternative. With room to seat up to 60 guests, this versatile space offers the ideal balance of comfort and connection to the surrounding landscape, allowing you to celebrate with confidence in any season.

The venue includes a dedicated kitchenette for your catering needs, as well as an outdoor terrace, AV facilities and after-hours access. Whether you're planning a formal seated dinner or a relaxed indoor celebration, the Waratah Room provides the flexibility to shape your day exactly as you imagine — against the backdrop of one of the Garden's most charming outlooks.

.....
Capacity: 60 people
.....

Event Types: Indoor Reception,
Wet Weather Option
.....

Facilities: Power Access, After-Hours Use,
Kitchenette, Outdoor Terrace, AV System
.....

THE BEACH



A tranquil haven with water views and wild beauty.

Tucked away in a quiet corner of the Garden, The Beach is a truly unique venue where sandy shores meet the soothing sounds of a cascading waterfall. With sweeping views of Blue Mountains National Park and a lush backdrop of ferns, proteas, Blue Puyas and water-loving plants, this intimate space offers a peaceful and picturesque setting for summer ceremonies and celebrations.

Ideal for wedding proposals, elopements, or gatherings of up to 80 guests, The Beach is perfect for those drawn to the charm of untamed beauty. Whether you're exchanging vows under the open sky or celebrating by the water's edge, this serene and immersive setting brings a sense of calm and connection to nature that will make your day truly unforgettable.

Capacity: 80 people

Event Types: Ceremony, Proposal, Photography





BRUNET PAVILION



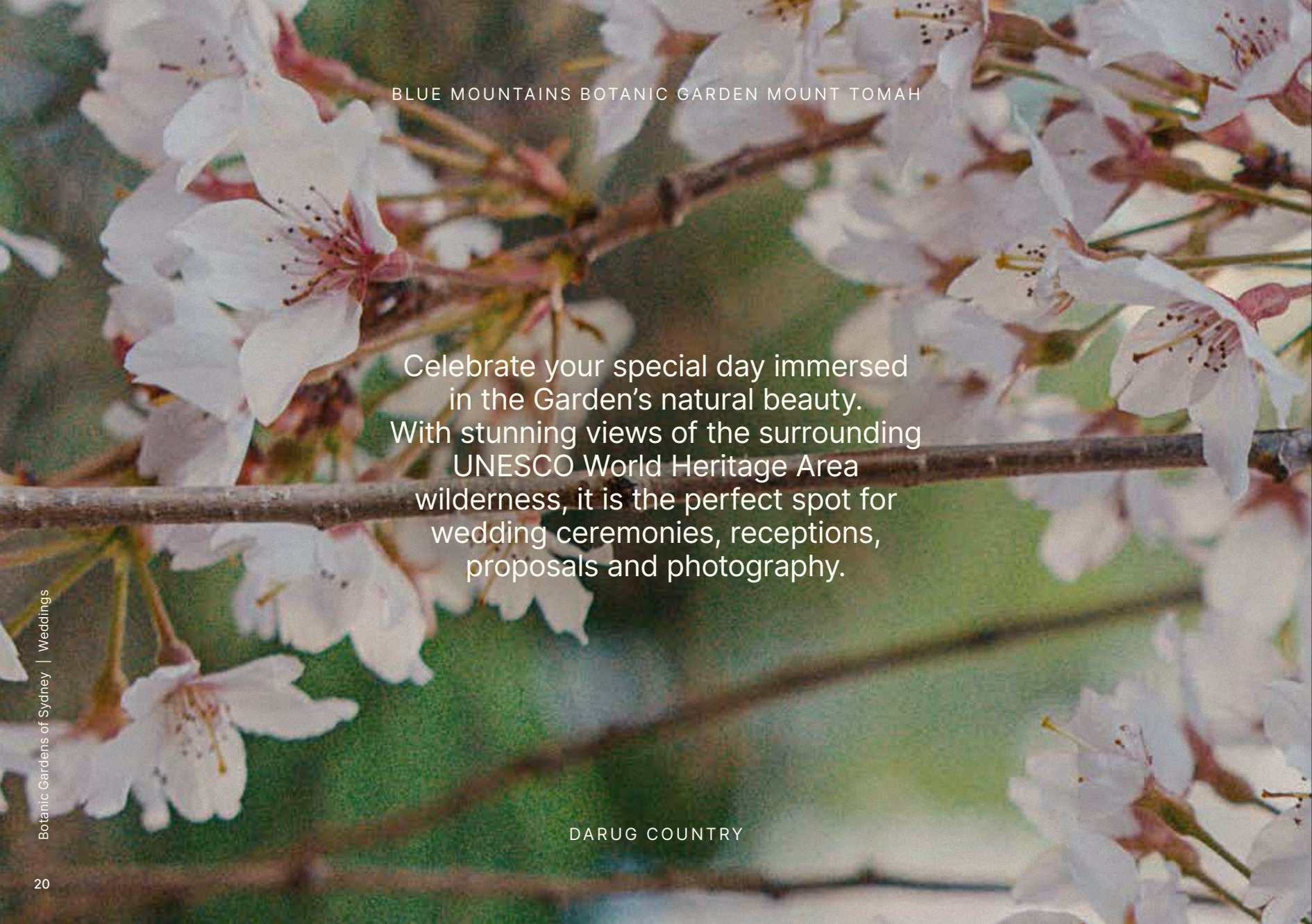
A picturesque pavilion for intimate celebrations.

.....
Capacity: 15 people
.....
Event Types: Ceremony, Proposal, Photography
.....

Brunet Pavilion is an intimate venue for smaller ceremonies and picnic-style gatherings.

Located near the Brunet Meadow and Garden’s conifer collection, the Pavilion has an arbour of trailing wisteria and camellias abound, as well as towering giant redwood varieties providing forest-like surrounds.

Capture beautiful photographs and celebrate under the shelter of this unique pavilion – the perfect space in any type of weather.



BLUE MOUNTAINS BOTANIC GARDEN MOUNT TOMAH

Celebrate your special day immersed
in the Garden's natural beauty.
With stunning views of the surrounding
UNESCO World Heritage Area
wilderness, it is the perfect spot for
wedding ceremonies, receptions,
proposals and photography.

DARUG COUNTRY

The Garden at a Glance
Find the perfect place for your special day.

Venue	Capacity	Ceremony	Reception	Proposal	After-Hours Use	Power Access	Wet-Weather Option	Photography	Additional Features
Wedding Tree Terrace	80	●		●				●	Includes Fountain Terrace with views
Formal Garden	120	●	Outdoor, Cocktail or Marquee	●	●	●		●	Accessible venue, close to amenities and parking, food trucks permitted
Heath & Heather Garden and Northern Pavilion	150	●	Outdoor, Cocktail	●				●	Includes the Northern Pavilion with views
Eucalyptus Lawn	100	●	Outdoor, Cocktail	●		●		●	Electric BBQs, food trucks permitted
Residence Garden	150	●		●				●	Close to amenities
Waratah Room	60		Indoor		●	●	●		Kitchenette, outdoor terrace, AV system, close to amenities and parking
The Beach	80	●		●				●	Waterfalls, views, close to amenities
Brunet Pavilion	15	●		●				●	Timber seating, close to amenities

Venue	Capacity	Ceremony	Reception	Proposal	After-Hours Use	Power Access	Wet-Weather Option	Photography	Additional Features
Brunet Pavilion	80	●		●					Timber seating, close to amenities
The Beach	80	●		●				●	Waterfalls, views, close to amenities
Waratah Room	60		Indoor		●	●	●		Kitchenette, outdoor terrace, AV system, close to amenities and parking
Residence Garden	150	●		●				●	Close to amenities
Eucalyptus Lawn	100	●	Outdoor Cocktail	●		●		●	Electric BBQs, food trucks permitted
Northern Pavilion	150	●	Outdoor Cocktail	●				●	Includes the Northern Pavilion with views
Heath & Heather Garden and	120	●	Outdoor Cocktail or Marquee	●		●		●	Accessible venue, close to amenities and parking, food trucks permitted
Formal Garden	80	●		●					Includes Fountain Terrace with views
Wedding Tree Terrace									

The Garden at a Glance
Find the perfect place for your special day.

BLUE MOUNTAINS BOTANICAL GARDEN

Celebrate your special day in the heart of the Garden's natural beauty. With stunning views of the surrounding UNESCO World Heritage Area wilderness, it is the perfect spot for wedding ceremonies, receptions and photography.

DARUG COUNTRY





EXPERIENCE BOTANICAL
BEAUTY IN EVERY SEASON

Flowers are in bloom all year round at the Blue Mountains Botanic Garden, not just spring. Along with spectacular views, the Garden offers magnificent floral backdrops for your special day. Here's what you'll often find in bloom throughout the year:



SPRING

The Garden bursts with breathtaking displays of colour as the bulbs, cherry blossoms and the waratah collection come into full bloom.

Cherry Blossoms

Waratahs

Paeonias

Blue Puyas



SUMMER

Warm days and balmy evenings mean that wedding guests can take full advantage of the Garden's summer splendour, featuring hydrangeas, lilliums and dahlias.

Hydrangeas

Dahlias

Liliums

Rhododendrons



AUTUMN

The golden hues of autumn transform the Garden, creating a glorious blanket of colour from Red Maples to the Golden Ginkgos.

Japanese Maples

Red Maples

Golden Ginkos

Mona Lavender



WINTER

As the native trees and plants blossom, the crisp air and soft light add a mystical edge to winter wedding celebrations against backdrops of camellias, King Proteas and more than 150,000 daffodils.

King Proteas

Snow Drops

Camellias

Daffodils

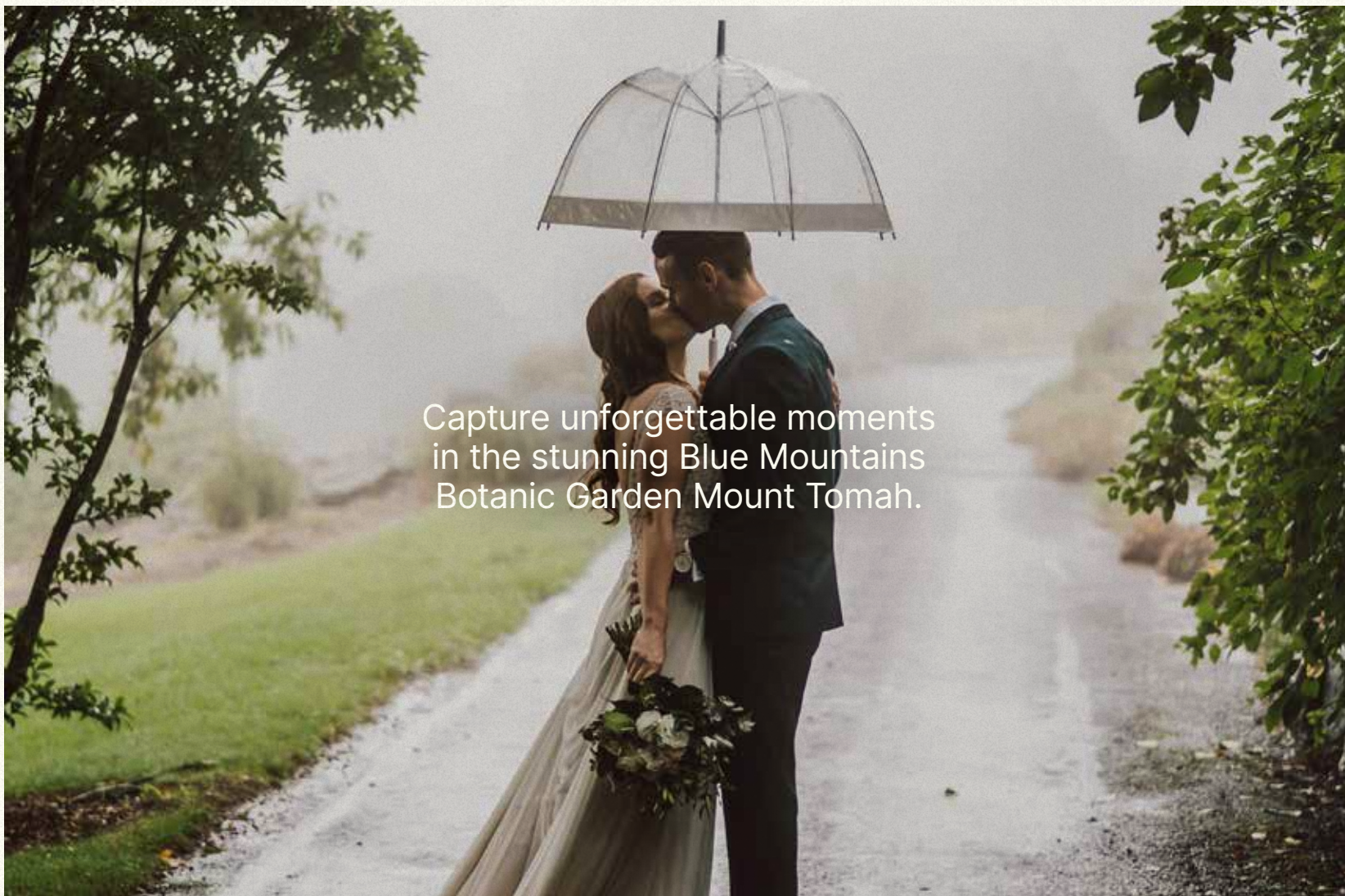
WEDDING PHOTOGRAPHY



Set in 28 hectares of spectacular landscapes with sweeping views of the surrounding wilderness, Blue Mountains Botanic Garden Mount Tomah offers an ever-changing canvas for your wedding photography.

From cool-climate rainforest and cascading waterfalls to woodland trails, ponds and vibrant seasonal blooms, the Garden provides a rich variety of backdrops to suit every style and moment.

With a photography permit, you're free to explore at your own pace — finding the perfect setting to capture the joy, connection and beauty of your day. Whether it's a quiet moment beneath the trees or a sweeping shot across the valleys, every frame tells part of your story.



Capture unforgettable moments
in the stunning Blue Mountains
Botanic Garden Mount Tomah.

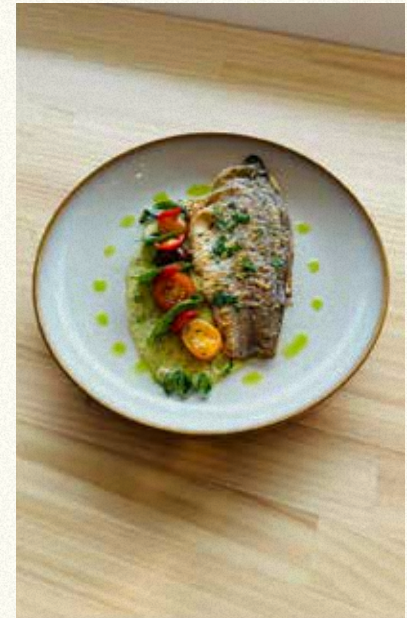
CATERING

Mountain-top cuisine to suit every Garden celebration.

A variety of cuisine options are available from the Garden's onsite catering partner, Bell Bird – from refined canapés to artisanal charcuterie boards and indulgent four-course à la carte menus.

Delight in exceptional cuisine paired with breathtaking views at your Garden venue.

Four-course tasting experiences and bespoke catering packages are available to suit your event – contact our Venues team for enquiries.





DISCOVER OUR OTHER BOTANIC GARDENS

For more inspiration, consider visiting our other two world-renowned botanic gardens — Royal Botanic Garden Sydney and Australian Botanic Garden Mount Annan. Each offers a unique collection of plants and beautiful surroundings.

Located in the heart of Sydney, Royal Botanic Garden Sydney is Australia's oldest botanic garden. It features a stunning mix of native and exotic plants, vast lawns and event venues with breathtaking views of the harbour.



Discover the beauty of Australia's native plant species and the science behind their conservation at Australian Botanic Garden Mount Annan. Celebrate your special day among picturesque lakeside locations, lush greenery and perfectly manicured lawns.



Wedding enquiries

For enquiries, bookings and photography permits, contact our Venues team:

tomah@botanicgardens.nsw.gov.au



Scan the QR code to
explore our venues online:



Printed on EcoStar 100% recycled uncoated
which is manufactured carbon neutral

Credits

.....
Daniel Learmont Couture: cover,
page 4, 11, 18, 27.

Rustic Events Styling: page 12, 13
(bottom right).

Berndt Sellheim, By George Events:
page 5 (bottom right), 16, 17 (top),
18 (top right), 19 (right).

Alexis Walton Photography: page 3.

Andre&Dominique Photography:
cover, page 4, 18 (left), 27.

Andy Mac Photography: page 14.

Annaliese Bakes Photography: page 2.

AvaMe Photography: page 5 (top), 24, 25.

Bedford Photography: page 6, 7 (bottom).

Chris Crottey Photography: page 19 (left).

Clarity Photography: back cover.

Deep Hill Photography: page 15
(bottom right), 18 (bottom right).

Jarrad Seng Photography: page 1, 10.

Josephine Sicad Photography: page 7 (top).

Matt Barbeau Photography: page 17
(bottom right).

Nick Wood Photography: page 11
(top, bottom left), 15 (bottom left), 22.

Samantha Heather Photography:
page 5 (bottom left), 8, 9.
.....



**BOTANIC
GARDENS
OF SYDNEY**

Darug Country
Blue Mountains Botanic Garden
Mount Tomah
Bells Line of Road
Mount Tomah NSW 2758, Australia

Gadigal Country
Royal Botanic Garden Sydney
and The Domain Sydney
Mrs Macquaries Road
Sydney NSW 2000, Australia

Dharawal Country
Australian Botanic Garden
Mount Annan
362 Narellan Road
Mount Annan NSW 2567, Australia

Discover more
[BOTANICGARDENS.ORG.AU](https://botanicgardens.org.au)

